



Low thermal inertia



Low water consumption



Versatility



Easy to stock and install



**16
bar**

Working pressure



STANDARD SUPPLY:

Blocks of 3, 4, 5, 6 sections.

The water diaphragm is included.

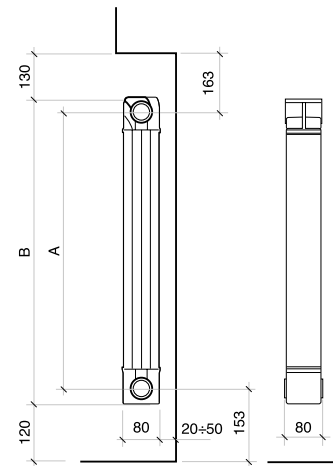
COLOUR: Ral 9010 White

Also available with **Alutarnum** anticorrosion treatment

ATTENTION: The minimum order for the radiator Garda Dual 80 must be at least a blocks of 3 sections.

All **GARDA DUAL 80** models are guaranteed **10 years** from installation date on manufacturing faults, provided that the installation has been performed in compliance with the current norms and respecting the instructions relating to the installation, the correct use and the correct maintenance as illustrated on this catalogue.

Model	Heat output				
	ΔT 30	ΔT 40	ΔT 50	ΔT 60	ΔT 70
	W/sect.	W/sect.	W/sect.	W/sect.	W/sect.
900	86,6	128,5	174,4	223,8	276,4
1000	92,9	138,6	189,1	243,6	301,9
1200	105,8	157,7	215,0	276,9	343,1
1400	118,6	176,8	241,0	310,4	384,4
1600	130,2	194,7	266,0	343,2	425,8
1800	142,1	211,5	288,0	370,6	458,7
2000	152,4	227,3	310,0	399,4	494,9

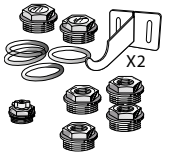
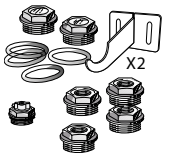








Model	Code	Depth	Height	Centre distance	Length	Connection diameters	Water capacity	Exponent	Coefficient
		mm	(B) mm	(A) mm	mm	inches	litres/sect.	n	Km
900	82F014	80	966	900	80	G1	0,47	1,3695	0,8217
1000	82G014	80	1066	1000	80	G1	0,52	1,3908	0,8198
1200	82H014	80	1266	1200	80	G1	0,60	1,3889	0,9391
1400	82I014	80	1466	1400	80	G1	0,70	1,3875	1,0585
1600	82L014	80	1666	1600	80	G1	0,79	1,3980	1,1213
1800	82M014	80	1866	1800	80	G1	0,88	1,3832	1,2864
2000	82N014	80	2066	2000	80	G1	0,96	1,3902	1,3473

Maximum working pressure: 1600 kPa (16 bar)

Characteristic equation of the model $\Phi = Km \Delta T^n$.

The thermal efficiency values shown comply with the European Standard EN 442-1:2014 and are certified by the CETIAT, notified body N°1623.

Article	Code	Description
	A 72	550118 Plug and 1/2" adapters kit, colour white Rough brackets, not painted 1 Bleed valve 1/2" 1 Rh blanking plug 1 Lh blanking plug 2 Rh adapters 1/2" 2 Lh adapters 1/2" 4 O-ring seals 2 Supporting brackets
	A 73	550119 Plug and 3/4" adapters kit, colour white Rough brackets, not painted 1 Bleed valve 3/4" 1 Rh blanking plug 1 Lh blanking plug 2 Rh adapters 3/4" 2 Lh adapters 3/4" 4 O-ring seals 2 Supporting brackets
	A 30/1	521011 Retainer rubber cap (water diaphragm)
	A 32/1	530102 O-ring gasket for nipples, plugs and adapters for Garda radiators
	A 33/1	521012 1"G special nipple for extruded radiators
	A 36/4	570014 Towel rack for Garda Dual 80 radiators, 4 sections, white 9010
	A 36/5	570024 Towel rack for Garda Dual 80 radiators, 5 sections, white 9010
	A 36/6	570124 Towel rack for Garda Dual 80 radiators, 6 sections, white 9010

For other accessories see page 75